

# MAAPnext Houston Stronger Luncheon

April 27, 2026



# A COUNTY SHAPED BY WATER

**Memorial Day  
(2015)**



**Tax Day  
(2016)**



**Harvey  
(2017)**



During Hurricane Harvey, 68% of all structures in Harris County that flooded were outside of the 1% mapped floodplain.

# MAAPnext

## Developing A Modern Understanding of Flood Risk



### Know Your Risk

Learn more at

[www.MAAPnext.org](http://www.MAAPnext.org)



### National + Local Expertise

Led by FEMA and supported locally by HCFCD

### Cutting-Edge Modeling

Updated rainfall data, topography, and key projects from HCFCD

### Community Support

Helping community understand and have their voice heard on new FEMA draft maps

# Collaborating to Update FEMA Regulatory Maps



## FEMA

Leads process to update regulatory floodplain maps

Issues official draft products & maps throughout process



## Flood Control District

Supports FEMA's efforts on behalf of the community by providing local perspective



## 34 Floodplain Administrators

Coordinate with public & local elected officials to gather feedback on draft products

Update local regulations, as needed



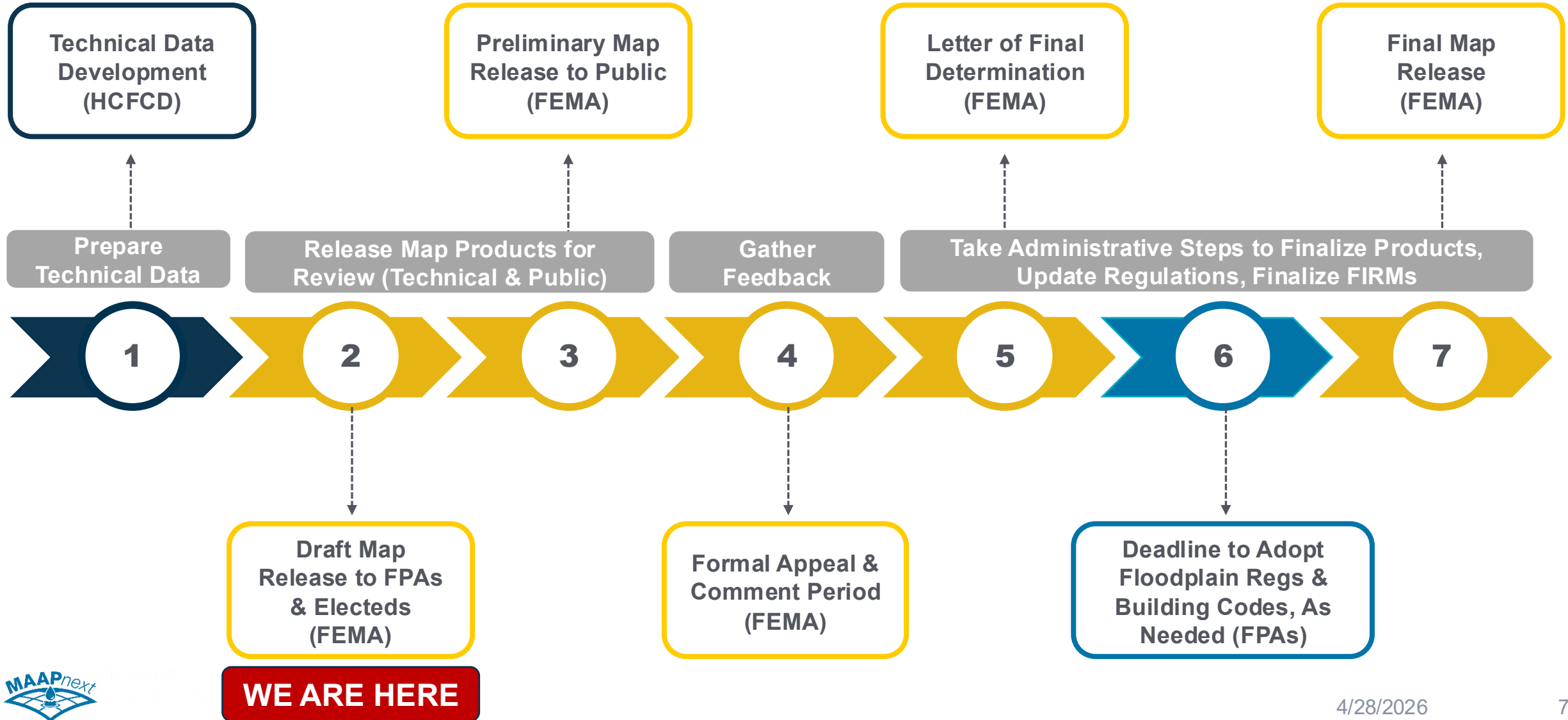
## Harris County Residents

Review maps and provides feedback to FEMA & floodplain administrators

# The Process

**FEMA's Formal Process to Update  
Regulatory Floodplain Maps**

# FEMA's Process to Update Maps



# Technical Work for Harris County



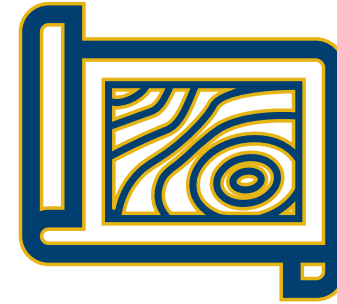
**1,600+**

total miles of  
channels  
studied, adding  
400 new miles



**30%**

increase in  
rainfall  
amounts



**100%**

updated  
Harris County  
topography



*Halls Bayou*



*Little Cypress Creek*



*Sims Bayou*



*Hunting Bayou*



*Brays Bayou*



*White Oak Bayou*

# What's Next

**Moving the Project Forward and Soliciting  
Public Feedback**

# Where We Are Today



FEMA has released draft maps to the 34 floodplain administrators and associated local elected officials for review.

**X**

Not final –  
these are  
draft maps

**X**

Not regulatory –  
these have not  
been adopted as  
“best available”

**X**

Not part of a  
formal comment  
process

# Looking Ahead

At least **21 – 33 months** left in the **FEMA process** before FIRMs could become effective

## WE ARE HERE

**Draft data release** from FEMA to FPAs & elected officials

**90 days**

**6-9 months**

**Preliminary data release** from FEMA to public; Community outreach begins (open houses)

**Formal appeal & comment period** hosted by FEMA

**90 days**

**3-12 months**

**Revisions to models & mapping** by FEMA, based on community input and in coordination with FPAs

**Letter of Final Determination** from FEMA to FPAs & elected officials

**6 months**

**Final effective maps (FIRMs)** released by FEMA

***Note:** This timeline is based on the ideal, standard process and does not account for any potential delays. For reference, draft maps were released in 2004 for TSARP and were not effective until 2007.*

# Local Coordination

- Meetings with industry groups and the community writ large
- Discussions with floodplain administrators about local policy making and standards
- Ultimately, this takes **every entity working together** to:
  - Update building codes / development standards
  - Update guidelines like HCFCD's PCPM and no impact standards
  - Determine insurance impacts

# How You Can Help

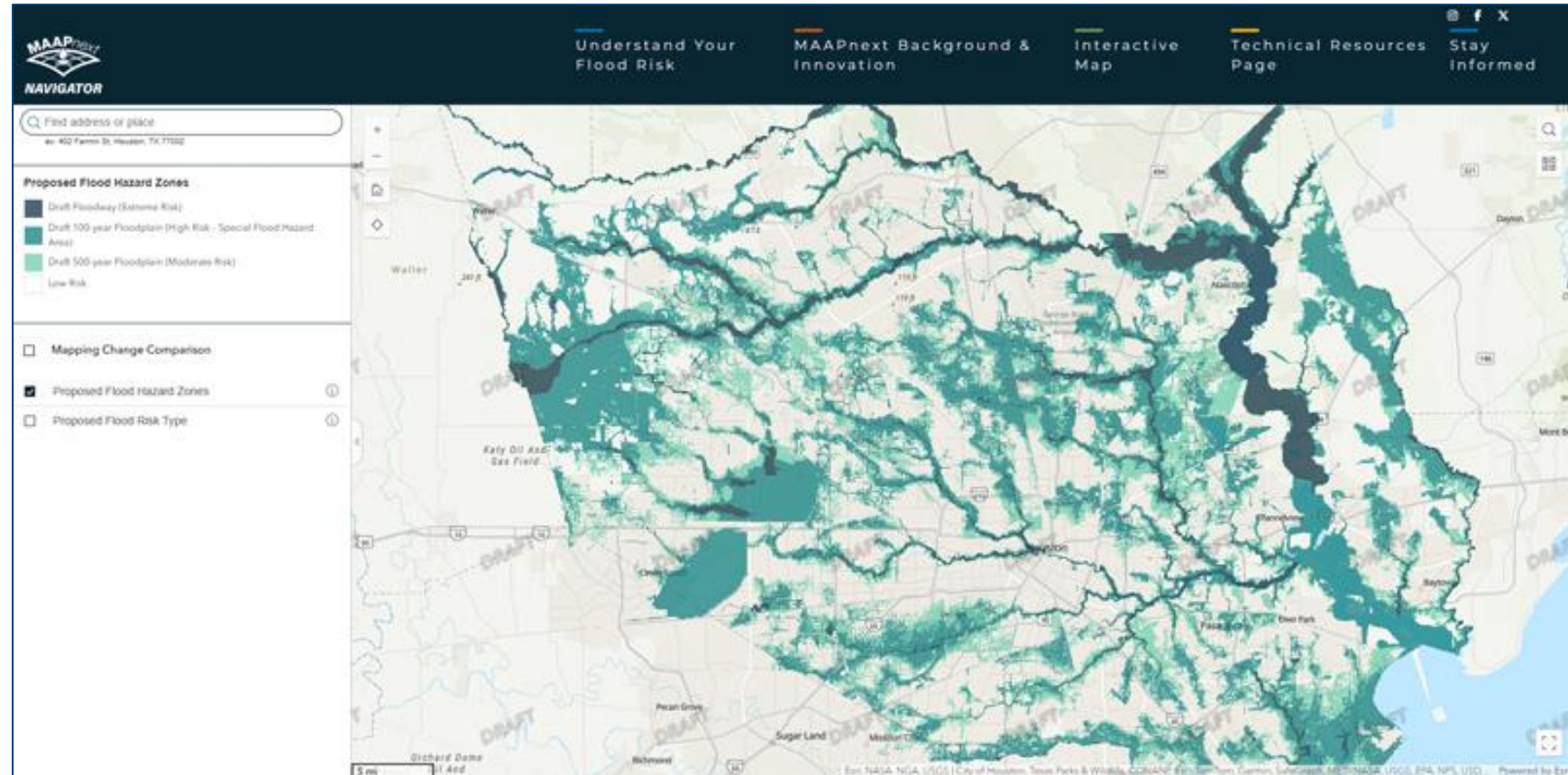
[HCFCD.org/MAAPnext](https://hcfcd.org/MAAPnext)

**Spread the word**  
when public  
comment begins

**Highlight our  
tool** as a resource  
for residents

**Engage** in policy  
conversations

**Help educate**  
about roles and  
responsibilities



# ADDITIONAL UPDATES

Delivering and planning work to reduce flood risk today and build the pipeline for future work.



**Thank you!**

---

