



**Dr. Tina Petersen, Ph.D., P.E.**

Executive Director  
Harris County Flood Control District



# **Houston Stronger: Working Together for Resilience**

September 22, 2025



# Centering the Discussion: Hurricane Harvey

# Hurricane Harvey's Impact



**1 TRILLION**  
gallons of stormwater  
across Harris County



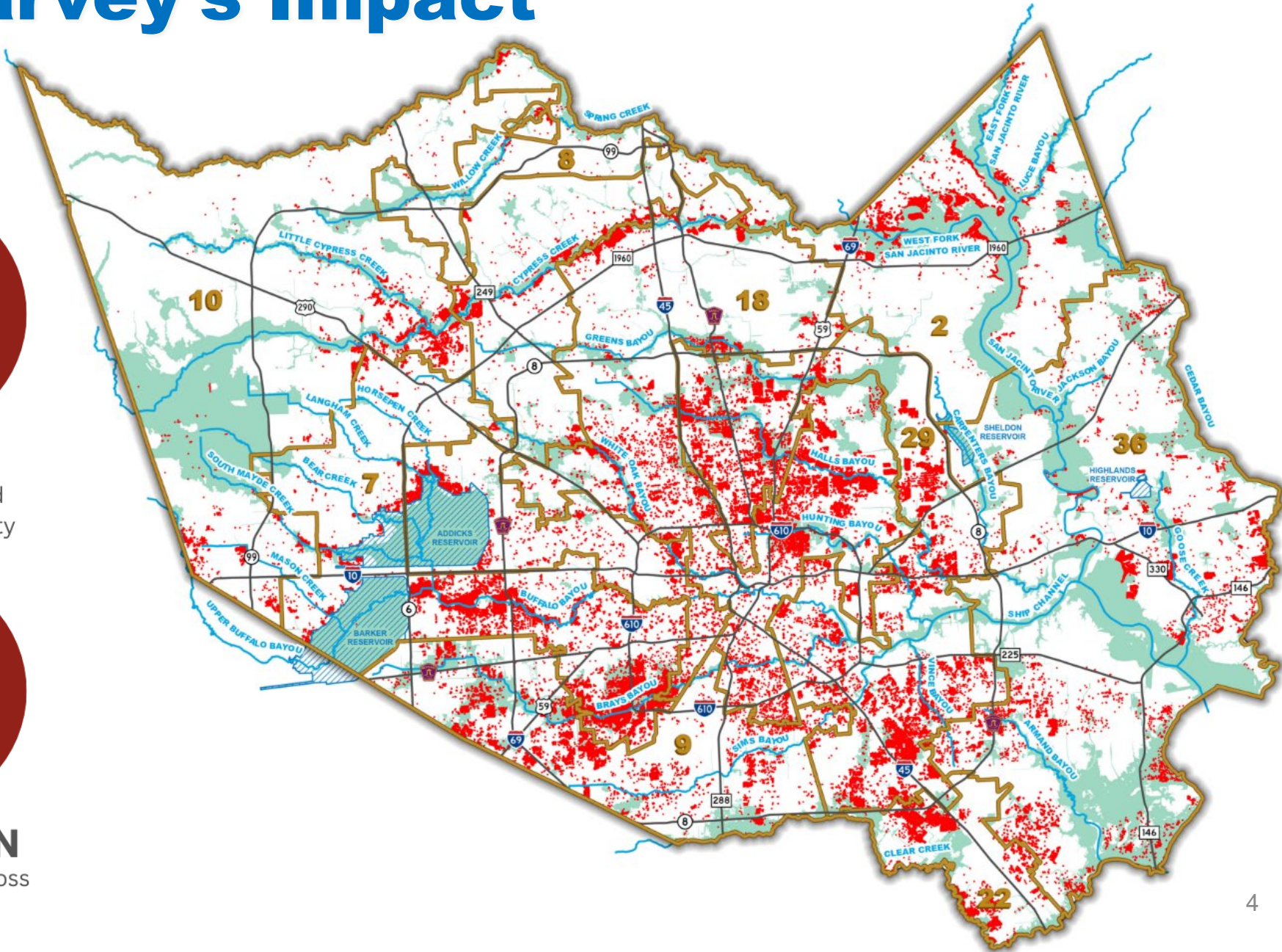
**154,170**  
structures flooded  
across Harris County



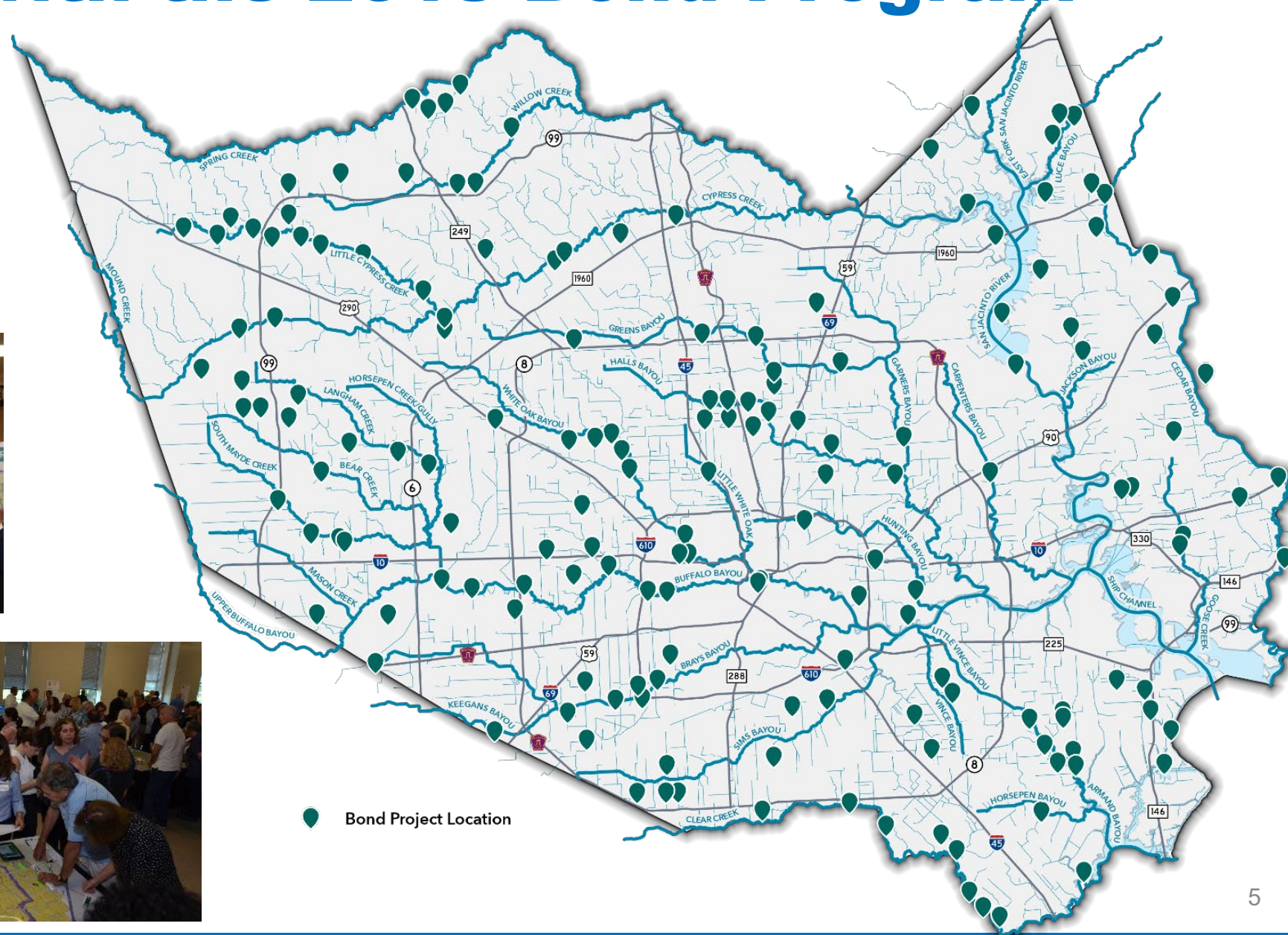
**37,000**  
people forced  
into shelters



**\$125 BILLION**  
in total damages across  
the state of Texas



# Responding with the 2018 Bond Program





# Unprecedented Progress Across Harris County



*Inwood Forest Stormwater Detention Basin*



*Note: Data on this slide is based on project estimates.*

*Lauder Stormwater Detention Basin*

# 16,000+

acre-feet of stormwater detention  
constructed



*Baywood Stormwater Detention Basin*



*Zube Stormwater Detention Basin*



*K163-00-00 Channel Work*



*Note: Data on this slide is based on project estimates.*

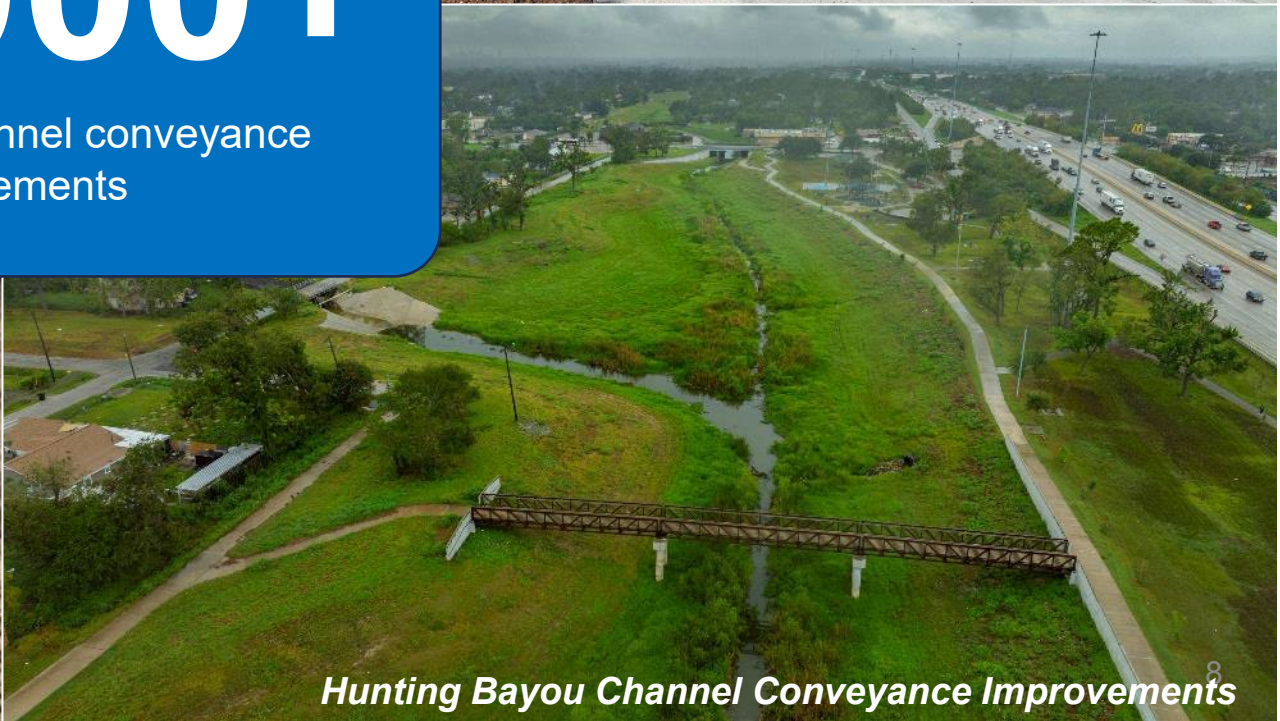
*Mud Gully Channel Conveyance Improvements*

# 46,000+

linear feet of channel conveyance improvements



*Turkey Creek Channel Work*



*Hunting Bayou Channel Conveyance Improvements*



# 5,800+

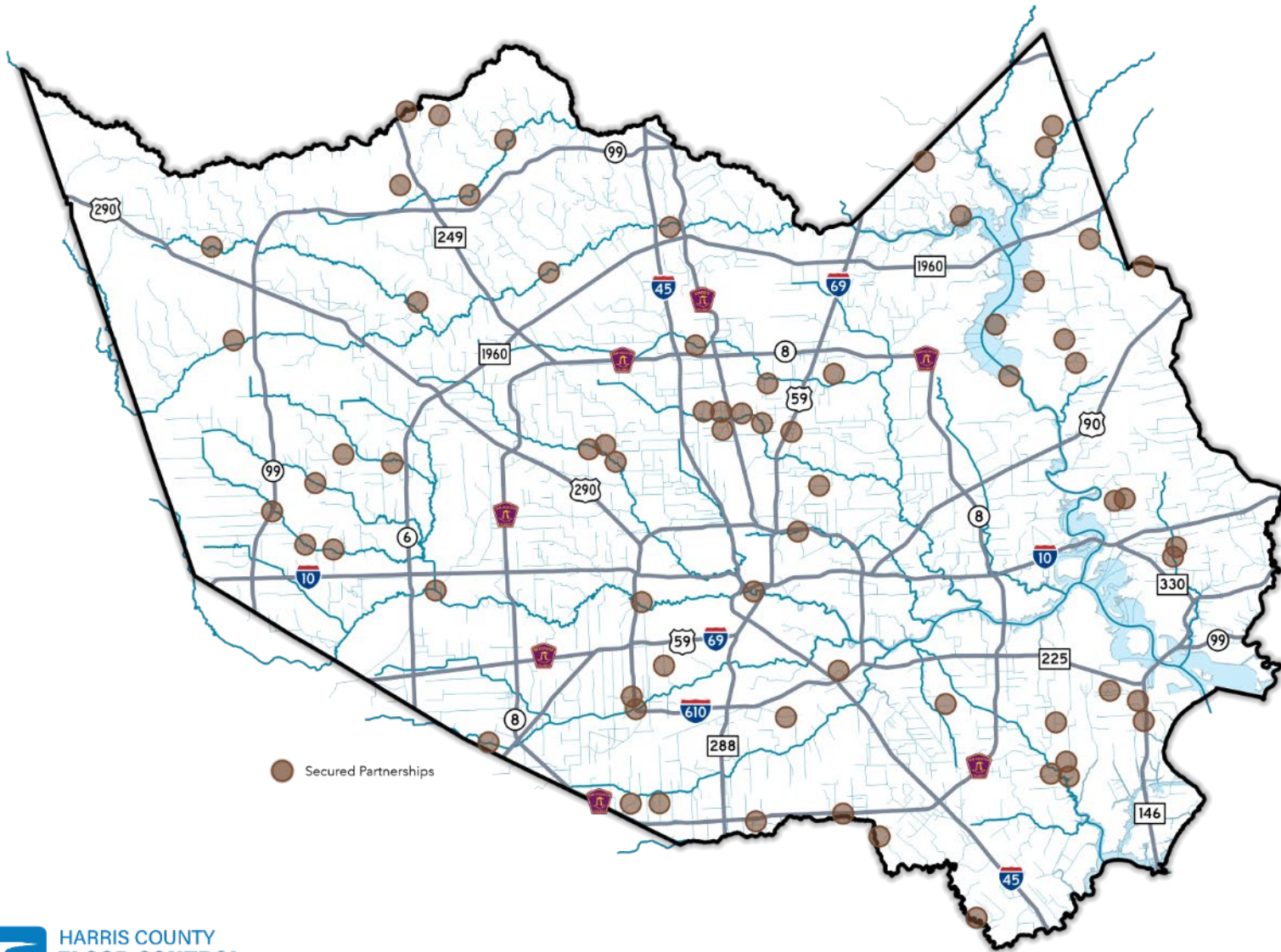
acres of land  
acquired & preserved



# 3,100+

people relocated  
to higher ground

# Secured Partnerships



**\$2.7  
BILLION**

secured through  
partnerships with

**27**

unique partners

A photograph of two men in white hard hats and high-visibility yellow safety vests standing in a grassy field. They are looking at a large, light-colored concrete structure that appears to be a flood control barrier or levee. The background shows a line of trees under a clear blue sky.

# **Where We Are Today: A Defining Moment**

# Another Tipping Point



1

**HURRICANE  
HARVEY**  
(2017)

Work in the immediate aftermath of Harvey focused on recovery, response, and emergency repairs.

2

**VOTER  
APPROVAL**  
(2019)

Voters approved \$2.5B in bond funds. Outreach informed a list of projects and concepts with varying levels of clarity.

3

**IMMEDIATE  
WORK**  
(2018-2019)

Initial program work focused on efforts that could move quickly, such as Project Brays, buyouts, and other projects that were already underway.

4

**PRIORITIZATION  
FRAMEWORK**  
(2019)

Commissioners Court approved a framework to guide the timing of project initiation, leading to changes in program schedules.

5

**PARTNERSHIP  
FUNDING**  
(2021)

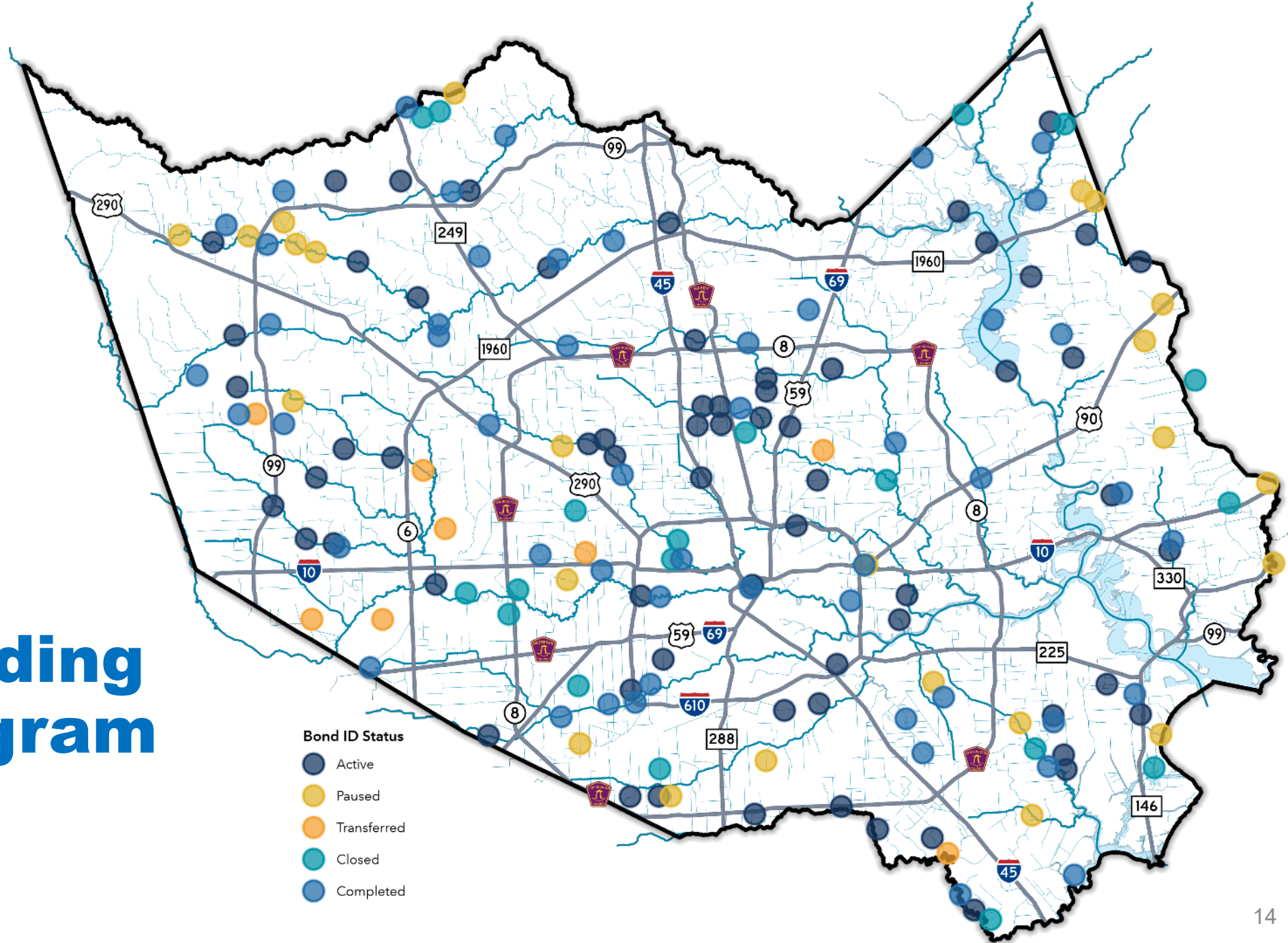
Discussions around a funding shortfall led to a reckoning about the lack of partnership funding that had been realized. The gap was later closed, with \$2.7B in partner funds secured.

6

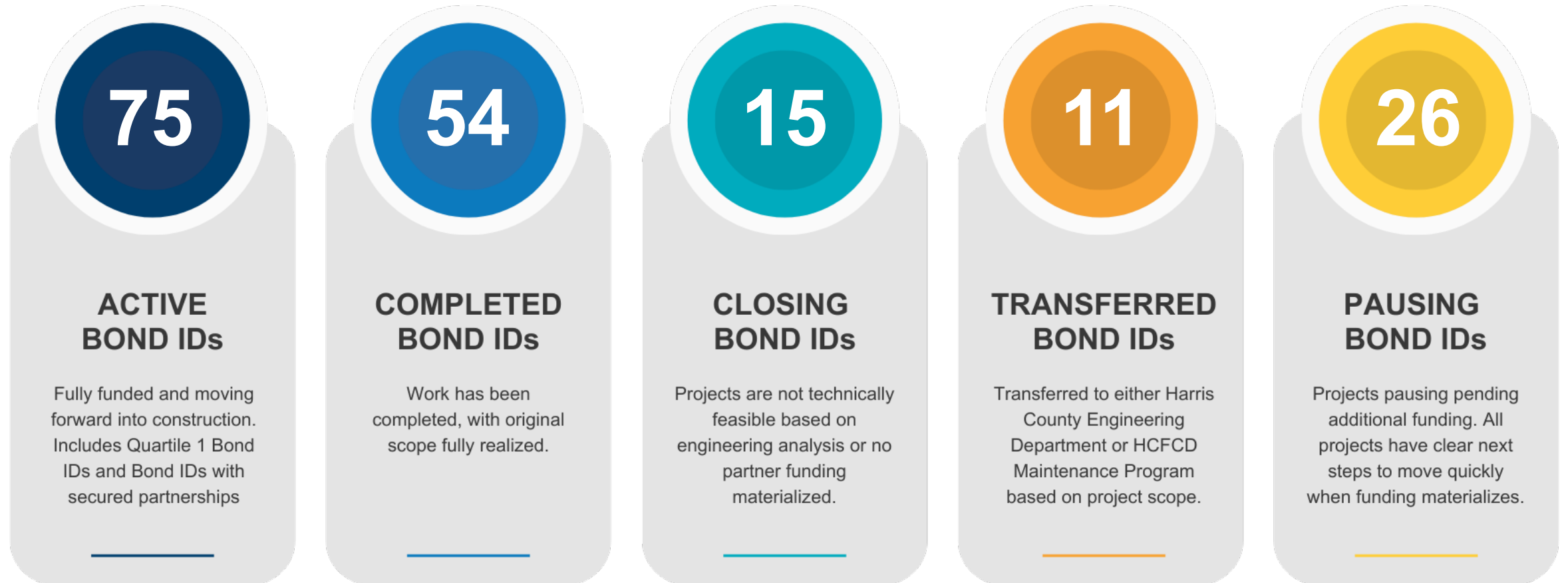
**PROGRAM  
CLARITY**  
(2025)

Cost increases on HCED's SDP sparked conversations about the 2018 Bond Program. Commissioners Court unanimously solidifies a path forward, including a list of active, paused, closed, and complete Bond IDs.

# A Shared Understanding of the Program



# A Shared Understanding of the Program

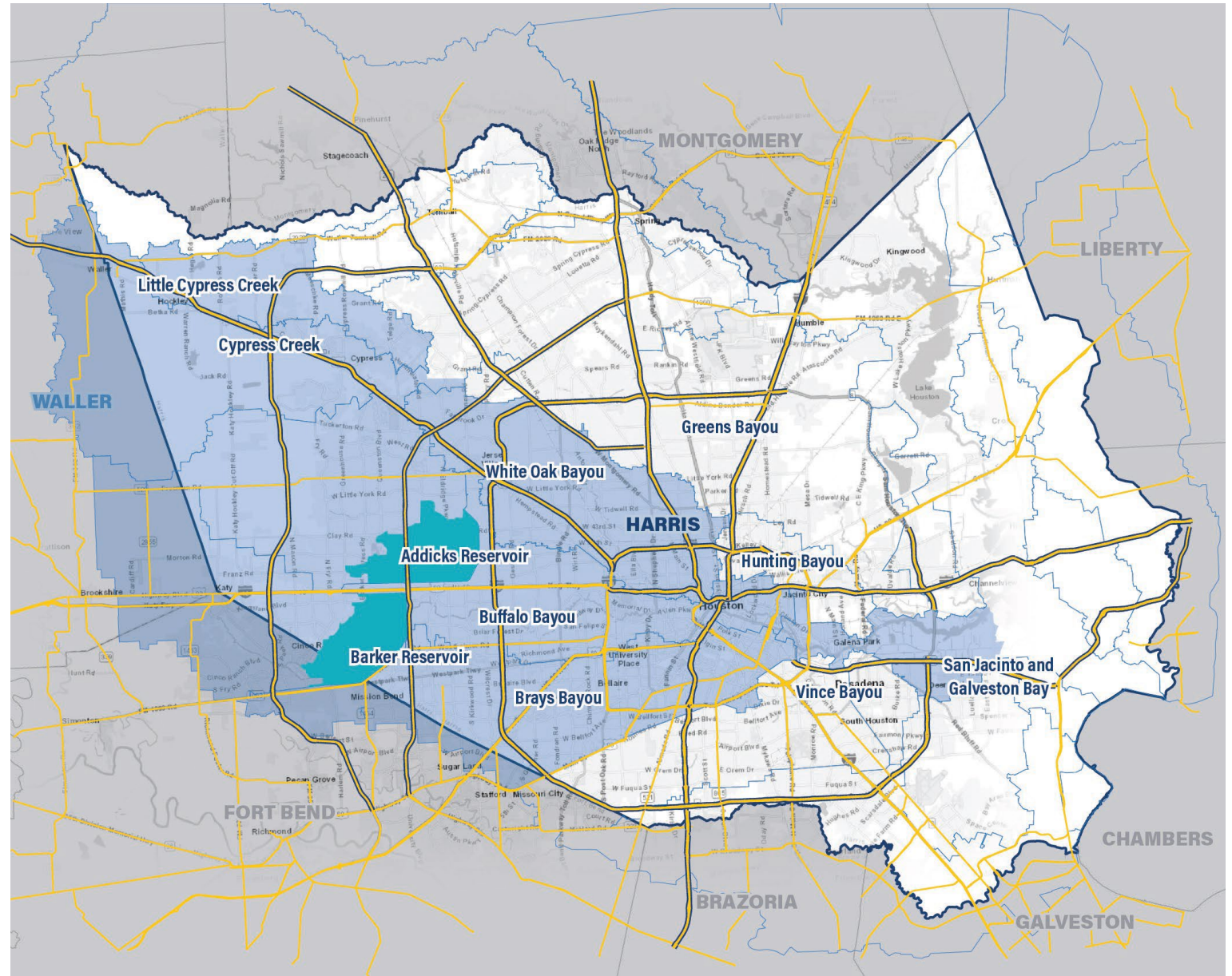


# Continuing to Deliver Benefits



# Highlights

**\$35 million**  
to continue investment in the  
**Buffalo Bayou and  
Tributaries Resiliency Study  
(BBTRS)**



# Highlights

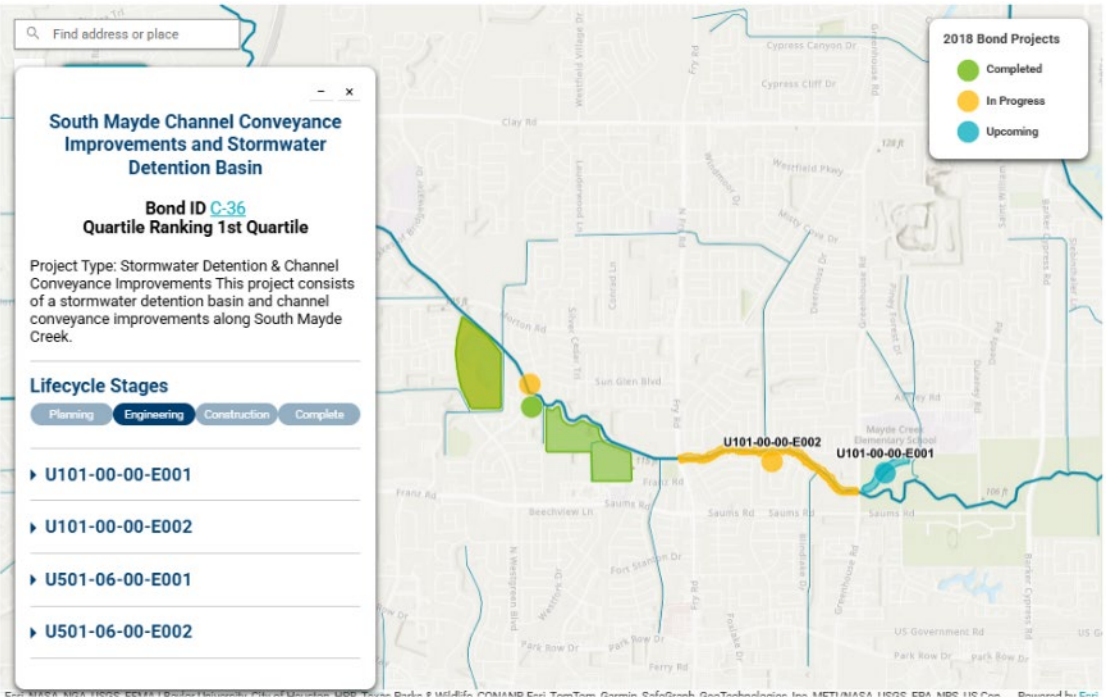
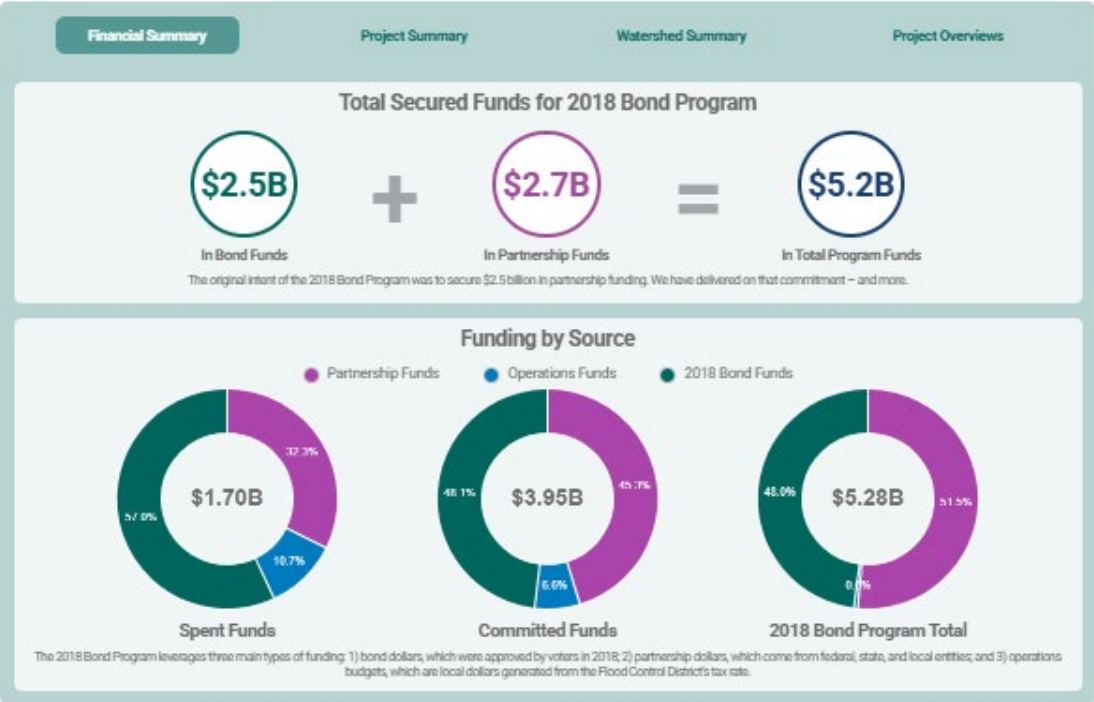
**\$20 million**

to the City of Houston for the  
**Lake Houston Gates Project**



# Ensuring Transparency & Reporting on Progress

[www.hcfcd.org/bondprogram](http://www.hcfcd.org/bondprogram)



# Looking Ahead

**We've taken a program that started out as a list of conceptual projects and grounded it in reality.**

- **Secured Partnerships:** Underscored commitment to partnerships – the bedrock of the 2018 Bond Program
- **Active Projects:** Gained clarity on project scopes and certainty on funding
- **Closing Projects:** Made important decisions on technical feasibility
- **Pausing Projects:** Identified solid projects that serve as a bench of projects that can move forward once additional funding is secured



# Increasing Investment in Flood Control Infrastructure

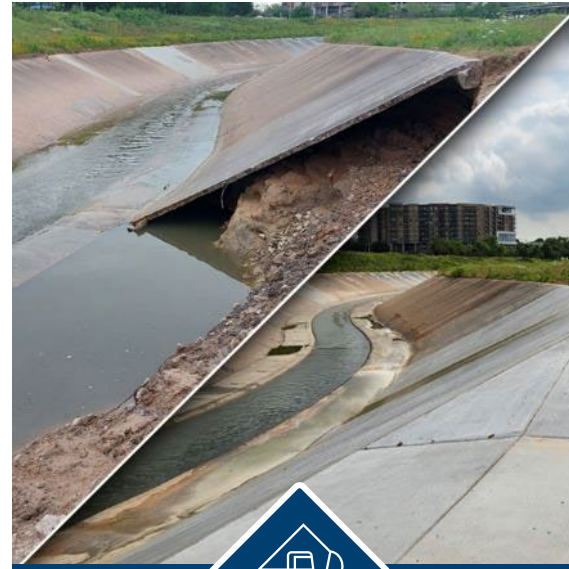
# Maintenance Approaches



PREVENTATIVE  
Maintenance



FORWARD-LOOKING  
Maintenance



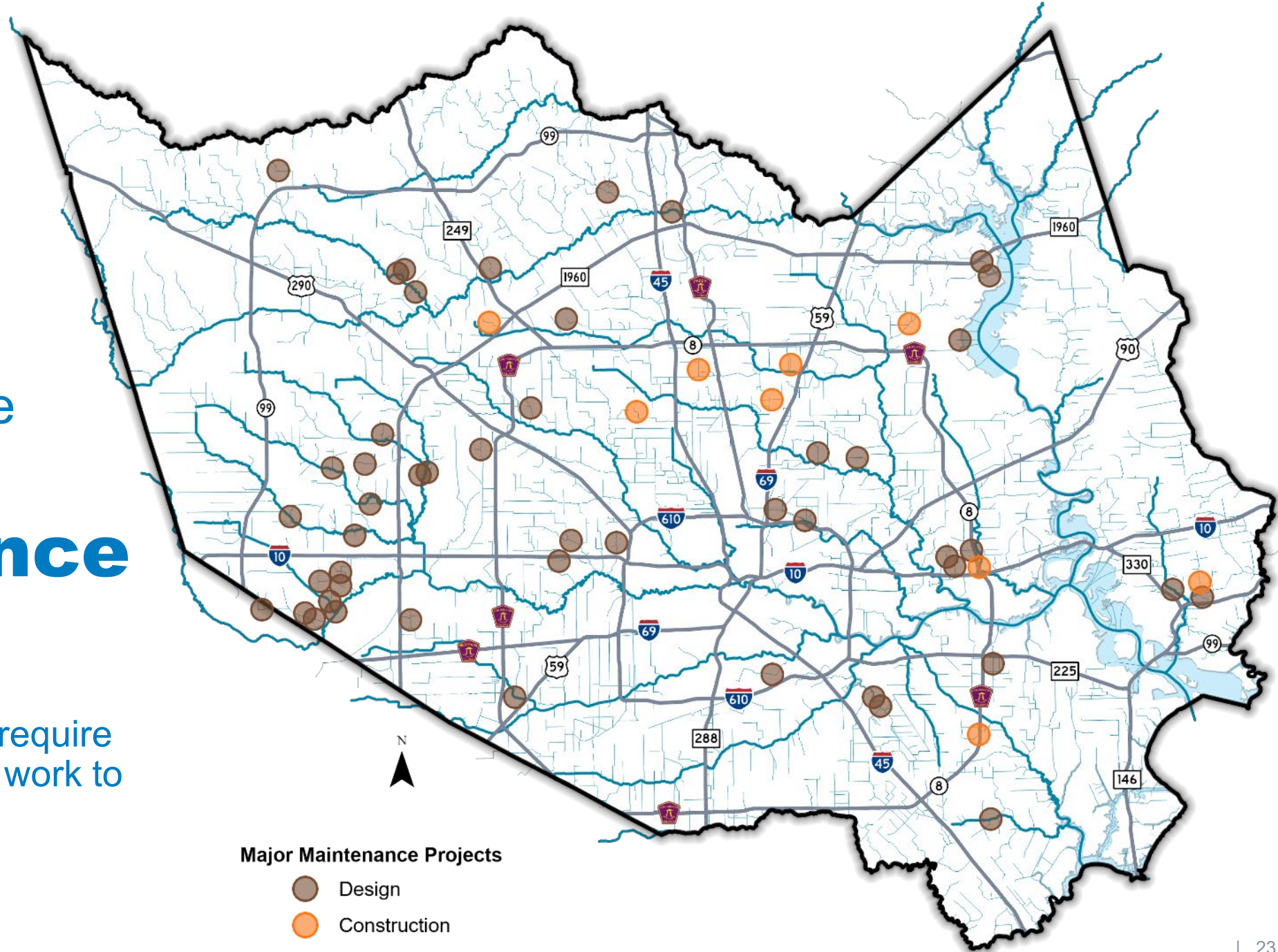
REPAIR & REPLACE  
Projects



FAST ACTION  
Service Teams

# Repair & Replace **Major Maintenance Projects**

These are projects that require engineering and design work to move forward.



# Repair & Replace Infrastructure Repairs

**2x**

Number of Projects  
in Progress

**117%**

Increase in  
Desilting Work

**62%**

Increase in Outfall  
Replacements



Halls Bayou (P118-00-00), Precinct 1  
Major Erosion Repairs



Little Cypress Creek (L100-00-00), Precinct 3  
Natural Stable Channel Design, Erosion Repairs



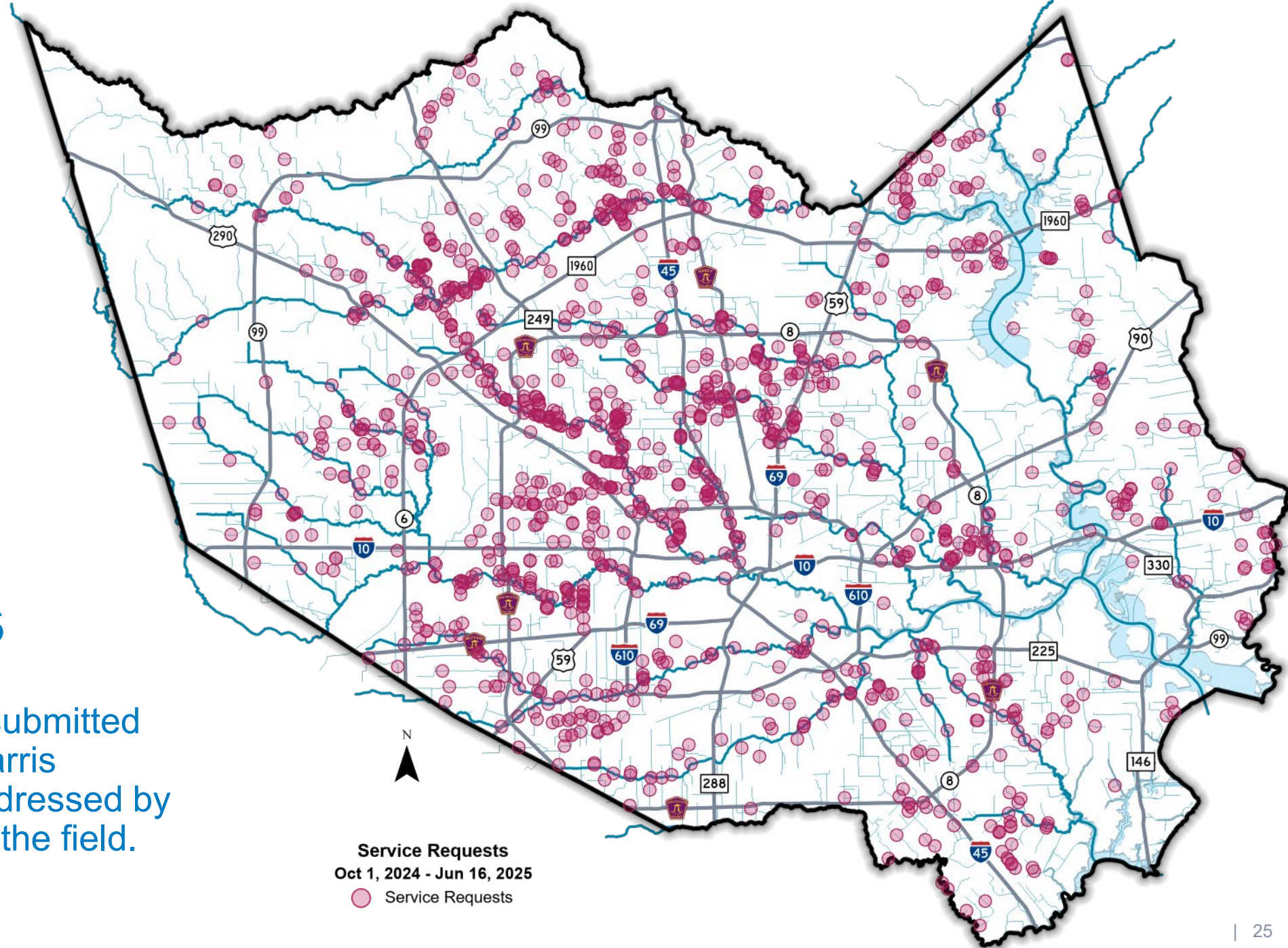
Goose Creek Tributary (O105-00-00), Precinct 2  
Sediment Removal, Outfall Repairs, Slope Repairs



Brays Bayou Tributary (D139-00-00), Precinct 4  
Slope Repairs, Pipe Replacement

# FAST Teams Resident Service Requests

Hot spots and issues submitted by residents across Harris County and quickly addressed by FAST Action Teams in the field.



# FAST Teams

## Responding to Our Residents



Precinct 1

Sinkhole repairs in the Greens Bayou Watershed



Precinct 2

Dipout in the Carpenters Bayou Watershed

# FAST Teams

## Responding to Our Residents



Precinct 3

Slope repair to protect Woodside Green and Kluge Rd bridge



Precinct 4

Dock repair in the Cypress Creek Watershed

Continuing to Scale

## **Areas of Focus for Remainder of FY2025**

- **Continued Ramp Up in Delivery:** Continuing to increase project delivery, with additional scaling in place before EOY.
- **Scaling the Organization:** Investing in people, equipment, facilities, and operations to support our expanded program.
- **Looking Ahead:** Emphasizing program management and the development of our comprehensive asset management program.
- **Engaging our Community:** Preparing for annual community meetings to provide updates on work that has been completed in FY2025 and gather input on what's ahead.



# Thank You!